

**.core**  
by inc.jet

## CASE CODING SOLUTIONS



## **.CORE Elements    .CORE Control**

The .core integrated heads are the essence of what makes inc.jet's industrial printing solutions so successful—rugged design, solid connections to external elements and the finest print heads in the industry, all provided in a commercial off-the-shelf system.

- Fully integrated system including, pens, print controller and bulk ink system
- Proven HP and inc.jet Technology
- Fully networkable
- 1" or 2" print options

### **The All-in-One Print Solution**

inc.jet's Integrated heads are enclosed in an industrialized stainless steel casing for maximum protection. Up to four print heads can be accommodated within to give a 2" print swath. Seamlessly included in this rugged housing is a print controller and a bulk ink system.

The integrated head has connections for external encoders, sensors and stack lights as well as a 10/100 BaseT port for connecting to an inc.jet User Interface or even external data sources.

Two height options are available—standard print height (0.75") or low profile (0.5") - allowing for close to the conveyor applications such as printing on trays.



### **Print Resolution**

- 600 dpi x 300 dpi – 250 feet per minute
- 300 dpi x 300 dpi – 500 feet per minute
- User configurable print density control

### **Printable Items**

- Lot Codes
- Barcodes
- Date/Expiry Date
- Shift Codes
- Foreign Languages
- Bitmaps/Logos
- Fixed Text
- User Inserts

## Designed for Case Coding

.core is a proven performer with a wide range of abilities—one of the many key differentiators for the time conscious package coding industry is IPS's bi-directional printing, allowing for simultaneous coding, front and back - why spend more on multiple printers, when the .core can do everything in one elegant system.

- Print front and back for simplified printing
- Money saving solution
- Variable and fixed data capability

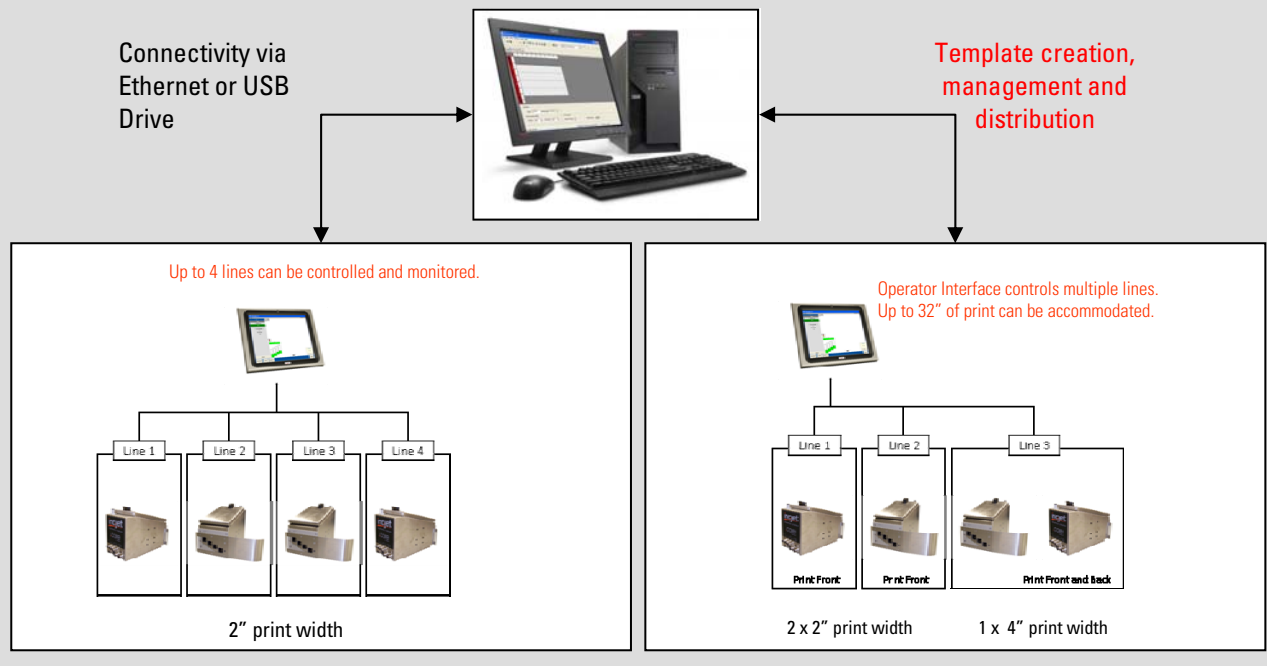
## Lowering the Total Cost of Ownership

With a bulk ink handling system included as an essential part of an integrated head, .core units are the most cost effective way of printing on cases and cartons. And with an ink designed specifically for printing on Kraft Corrugate and other carton materials available, total running costs are minimized at all times.

- 800mL Bulk systems.
- Large selection of standard and custom inks.
- Print in black or in color

## Create, Communicate, Control

The IPS system can separate template creation and control from day to day printing processes, allowing supervisors to design and manage effectively, while empowering operators with a clean and simple way to run and monitor package coding.





**15" User Interface (5019311G)**

The User Interface (UI) is a Windows XP Embedded, 15" touch screen computer which provides print job design, printer configuration, control and monitoring for up to sixteen Print Controllers or four lines. The 15" UI has both IPS Director and IPS Producer pre-installed. It is supplied with a keyboard and mouse and a keyboard mounting bracket suitable for installation on the Fixed Stand. A USB port allows for connection to hand held barcode scanners or for thumb drives to upload print jobs.

**6" User Interface (5018188G)**

The User Interface is a Windows CE industrial touch screen computer, providing printer configuration, control, and command from a single point for up to sixteen Print Controllers or four lines. IPS Director™ is preinstalled. Operationally, a wide variety of operating conditions can be monitored in real-time, including job types, counts and even ink consumption. A USB port allows for connection to hand held barcode scanners or for thumb drives to upload print jobs.



**1" INTEGRATED PRINT HEAD (STANDARD PROFILE) (5019216G-2PEN)**

The .core printer is a rugged, industrial, enclosure containing an inc.jet jet.engine V5 print control card and two Standard pen stalls providing a 1" print capability. The box has industrial connections, and is internally cooled without drawing in outside air.



**2" INTEGRATED PRINT HEAD (STANDARD PROFILE) (5019216G)**

The 2" integrated head provides 2 inches of vertical print that can be placed within 1 1/2" above the conveyor, making it ideal for many case coding applications. Like the 1" variant, it has internal bulk ink regulators and connections for mounting the sensor on the left or right. It is also supplied with an external ski assembly and all power cords

**2" INTEGRATED PRINT HEAD (LOW PROFILE) (5019310G)**

The low profile .core integrated head is available only in a 2" print variant. It enables printing to start from 1/2" from the conveyor. It is supplied with internal bulk ink regulators, connections for mounting the sensor on the left or right and an external ski assembly and all power cords.



**.CORE ACCESSORY KIT (5019309G)**

The accessory kit provides sensors, encoders associated brackets and a stack light assembly. The kit is necessary for the first .core unit to enable print. For additional connected .core units, no other accessory kit is required as signals from the sensor and encoder can be shared using the daisy chain cable supplied with the .core.



**Ethernet Switch Kit (5018683G)**

inc.jet offers a 5-Port Ethernet Switch kit. This is required for all systems with multiple print controllers or a connection to a plant network.

**Hand Held Barcode Scanner (4583383G)**

This is a laser-based scanner, ideally suited to reading a variety of barcodes. With its USB connectivity it can be connected directly into either the 6" or 15" UI with no additional software installation. It is highly tough and durable. The Barcode Scanner is used by operators to load jobs.



**Ethernet Cable – 3 meter (4253302G)**

An Ethernet interface cable is provided with each print controller. Additional cables are available, if required.

**800mL fuel.tank Bulk Ink Holder with Empty Detect Kit (5018649GC)**

The 800mL fuel.tank Bulk Ink Holder with Empty Detect Kit is a gravity-feed bulk ink system with attached mounting hardware designed for jet.fuel inks. The unit detects when the bulk ink is empty and has an LED (Green/Red) that displays the ink status. The Empty Detect switch connects directly to the IPS Print Controller I/O Connector using the included Cable Assembly.

**Bulk Ink Bottle System with Empty Detect (5019132GC)**

The Bulk Ink Bottle System with Empty Detect is a gravity-feed bulk ink system with attached mounting hardware designed for use with jet.fuel 475mL ink bottles. The unit detects when the bulk ink is empty and connects directly to the IPS Print Controller I/O Connector using the included Cable Assembly.





**Fixed Floor Stand (5018774G)**

The vertical stand is a fixed unit with a movable arm for rigid mounting of the print head. This stand is designed to be permanently attached to a concrete floor. The stand has mounting channels on each side, allowing for print controller, bulk ink, user interface, print heads and other attachments. *(does not include user interface, integrated head, bulk system, stack light or base plate—for demonstration purposes only)*

**Additional Arm for Fixed Floor Stand (5018704G)**

When an additional print head is required to increase print height or to place the print head in a different position, a further arm can be mounted to the Fixed Floor Stand.



**Spring-loaded Slide Mount Kit (5019300G)**

The spring-loaded slide mount is designed to provide accurate and reliable retraction and return of print heads for up to 1/2" of motion from its original set position. Optimal print quality is accomplished by keeping the pens in contact with carton surfaces without the need for repeated adjustment of the mounting equipment. *(does not include print head and mounting bracket—for demonstration purposes only)*



**Adjustable Conveyor Mount (5018850G)**

The Adjustable Conveyor Mount allows mounting of a print head or swing arm onto the conveyor assembly. Once mounted, the system allows easy up-down and in-out component adjustment. The picture below shows the four main components of the adjustable conveyor mount. The vertical bracket slot allows 8.25" vertical range of motion. The Horizontal bracket allows a 6" range of motion.

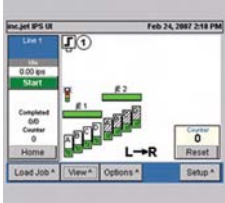
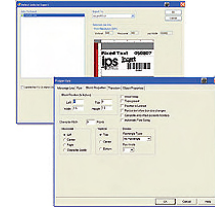


**User Interface Swing Arm Conveyor Mount Kit (4583318)**

A Swing Arm Conveyor Mount is available for mounting the user interface. The kit has a universal clamp mount.

### IPS PRODUCER

IPS Producer separates template creation and control from day to day printing processes. Operating on any computer running Windows, it permits the creation of print templates that can be exported into the User Interface via an Ethernet connection or by using a USB thumb drive.



### IPS DIRECTOR

IPS Director software runs on the User Interface and provides printer configuration, control and monitoring. The interface allows the user to monitor a wide variety of operating conditions, including job types and job counts and even ink usage, all in real-time.

### WINDOWS PRINT DRIVER

The inc.jet Windows Printer Driver (WPD) is designed to take full advantage of the flexibility of inc.jet's printer—the jet.engine. It allows the user to use third party software such as EASYLABEL® and BarTender® to create print-jobs and then print them using the IPS hardware. Printing becomes as simple as using a desktop printer.



### Capping Station (5014684)

An ideal way to store pens while preventing inks from drying out. Stores up to 3 pens at one time. A latch locks the pens in place allowing them to sit until next use without worrying about drying out.

### Tech Wipes—Pack of 150 (1952217)

High absorbency, heavy duty wipes are ideal for cartridge maintenance. Can be used wet or dry, made from a hydro-entangled blend of Polyester & Cellulose, will not leave any lint residue behind.



### Priming Kit (5017864G)

The priming kit could be used to prime bulk ink supplies, regulators and individual bulk cartridges. A Nozzle Priming Kit is supplied with the Priming Kit.

### Nozzle Priming Kit (5019065G)

This kit is used to remove air from a nozzle ink chamber on the cartridge. It is supplied with a plastic syringe and cartridge clip.

# .core

by inc.jet



inc.jet, inc.  
One Winnenden Road  
Norwich, CT 06360  
USA

Tel: +1-877-228-9456 (toll free)  
+1-860-823-3090  
Fax: +1-860-859-4402

incjet  
1990 1991 1992 1993 1994 1995 1996 1997 1998 1999 2000 2001 2002 2003 2004 2005 2006 2007 2008 2009 2010 2011 2012