



Industrial Inkjet Equipment for all of Your Marking and Coding Needs

FoxJet offers a variety of inkjet printing technologies and the smartest controllers in the industry.



Marksman *PRO*

Marksman Pro

This industrial stand-alone computer with Windows XP Professional operating system controls up to 6 printheads with premium Boxwriter Pro editor software. The Marksman Pro supports fast product changeover and offers password protection and report generation. This controller runs ProSeries® and Trident®-based Marsh® printheads as well as VxJet 9X printheads, which are valve-based.

Specifications

Processor: SBC 850 MHz with 128 MB RAM
Supply Input: 100-240VAC, 50-60Hz at 3A max
Ports: Ethernet, External USB Port, APS, RS232 Serial Port, PS/2 Keyboard/Mouse Input
Enclosure: Stainless steel
Weight (Controller only): 28.4 lbs (12.9 kg)
Operating System: Windows XP Professional
Keyboard: Elastomeric, 70-key, QWERTY style

Environment: Ambient operation temperature – 40° to 104° (5° to 40° C), Operating humidity – 10 to 90%, non-condensing
Printheads: Up to 6 ProSeries 192, NP192 or AC printheads or up to 4 ProSeries 384 or 768 printheads
Storage: 40 GB hard drive
Alarms: Optional beacon
Printhead to controller: Maximum distance between printheads and controller is 25 ft

Marksman *Net*

Marksman Net

This industrial "smart" controller is designed for flexibility. It works with a single printhead or can network with multiple Marksman Net controllers using BoxWriter Net software for control of an entire factory. It offers a Windows Interface, software control of multiple printheads, Boxwriter Net software, modular units, password protection and report generation. The Marksman Net controls any and all ProSeries-style printheads.



Specifications

Supply Input: 100-240VAC, 50-60Hz at 1.5A max
Ports: 10/100 Base-T Ethernet, APS, RS232, Power, 24VDC @ 3.0A, Printhead – ProSeries, Encoder/PC Input, Encoder/PC Output
Enclosure: Stainless steel
Weight (Controller only): 2.4 lbs (1.09 kg)
Enclosure: Extruded Aluminum, 7.75"L x 5.5"W x 2.25"H
User Interface: Internet Explorer 6.0 or newer (5.5 or newer for W95 OS), Boxwriter Net Application (designed for Windows XP)

Environment: Ambient operation temperature – 40° to 104° (5° to 40° C), Operating humidity – 10 to 90%, non-condensing
Printheads: 1 ProSeries printhead
Storage: 4 Meg Flash Memory for logos, fonts, messages and bar codes
Indicators: Power: Green, Activity: Flashing green, Malfunction: Red – Flashing: Low Ink, Solid: Low Temp, No HV, Out of Ink
Alarms: Optional Marksman Hub with optional beacon
Printhead to controller: Maximum distance between printheads and controller is 25 ft





ProSeries⁷⁶⁸

ProSeries 768

The ProSeries 768 is a high resolution printhead that prints text, graphics, bar codes and logos up to 4" tall. This Trident-powered printhead is an ideal replacement to preprinted boxes or expensive labels. The 768 is compatible with FoxJet's Marksman Pro and Marksman Net controllers.



Printheads

Print height:	Image area up to 4"
Print Orientations:	Integrated – horizontal
Optional:	Modular for print down and other applications
Mounting:	Perpendicular to product
Orifices/Channels:	768/256
Lines of Print:	Up to 42 lines
Horizontal resolution:	150 to 300 dpi
Throw distance:	Up to 1/8"
Operating conditions:	Temperature 50 – 104 degrees (10-40C), Relative humidity (non-condensing) 20-80%
Storage conditions:	Temperature 32-109 degrees (0-43C), Relative humidity (non-condensing) 20-80%
Cable lengths:	30" standard, 10' and 25' extensions available

Ink & Delivery System

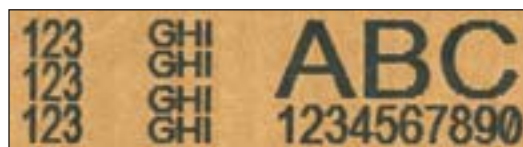
Priming:	Automatic Priming System, standard
Ink Delivery:	Dual feed system
Sensors:	Float switch low ink sensor and full waste bottle sensor
Ink:	ScanTrue II black
Substrates:	Formulated for porous surfaces
Applications:	Formulated for bar codes, logos, graphics and text messages
Drying time:	Less than a 1/4 second on porous surfaces
Characters/ML:	199,800 characters at .375" height (10 mm), 173,160 characters at .5" height (12mm), 37,106 characters at 1" height (25mm), 19,604 characters at 2" height (51mm)



ProSeries^{AC}

ProSeries AC

This high resolution printhead prints alphanumerics up to 2 inches tall. The ProSeries AC can print up to five lines of code from almost a 1/2" from the case. Pushbutton priming allows for low maintenance and superb print quality. The ProSeries AC printheads are designed to run with the Marksman Pro and Marksman Net controllers.



Printheads

Print height:	Image area from .75"-1.9" (19mm - 48mm)
Print Orientations:	Integrated – horizontal
Optional:	Modular for print down and other applications
Mounting angle:	24-90 degrees from horizontal
Orifices/Channels:	224/32
Lines of Print:	Up to 5 lines
Horizontal resolution:	150 to 300 dpi (with Marksman Pro)
Throw distance:	Up to 1/2"
Operating conditions:	Temperature 50 – 104 degrees (10-40C), Relative humidity (non-condensing) 20-80%
Storage conditions:	Temperature 32-109 degrees (0-43C), Relative humidity (non-condensing) 20-80%
Cable lengths:	30" standard, 10' and 25' extensions available

Ink & Delivery System

Priming:	Pushbutton electric pump
Ink Delivery:	Dual feed system
Sensors:	Float switch low ink sensor
Ink:	ScanTrue II and AlphaMark black
Substrates:	Formulated for porous surfaces
Applications:	Formulated for text messages
Drying time:	Less than a 1/4 second on porous surfaces
Characters/ML:	199,000 characters at 3/8" height (10mm), 173,000 characters at 1/2" height (12mm), 37,000 characters at 1" height (25mm), 19,500 characters at 1 7/8" height (48mm)

ProSeries³⁸⁴



ProSeries 384

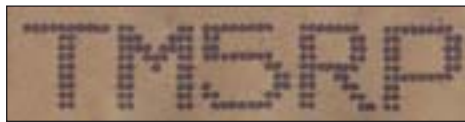
The 384 is a high resolution printhead capable of printing text, graphics, bar codes and logos up to 2" in height. The ProSeries 384 is a perfect solution to corrugate tray pack marking and is available to use with Marksman Pro or Marksman Net controllers.

Printheads

Print height:	Image area up to 2"
Print Orientations:	Integrated – horizontal
Optional:	Modular for print down and other applications
Mounting angle:	90 degrees
Orifices/Channels:	384/128
Lines of Print:	Up to 21 lines
Horizontal resolution:	150 to 300 dpi
Throw distance:	Up to 1/8"
Operating conditions:	Temperature 50 – 104 degrees (10-40C), Relative humidity (non-condensing) 20-80%
Storage conditions:	Temperature 32-109 degrees (0-43C), Relative humidity (non-condensing) 20-80%
Cable lengths:	30" standard, 10' and 25' extensions available

Ink & Delivery System

Priming:	Automatic Priming System, standard
Ink Delivery:	Dual feed system
Sensors:	Float switch low ink sensor and full waste bottle sensor
Ink:	ScanTrue II black
Substrates:	Formulated for porous surfaces
Applications:	Formulated for bar codes, logos, graphics and text messages
Drying time:	Less than a 1/4 second on porous surfaces
Characters/ML:	199,800 characters at .375" height (10 mm), 173,160 characters at .5" height (12mm), 37,106 characters at 1" height (25mm), 19,604 characters at 2" height (51mm)



VxJet 7X

The VxJet7X comes complete with printhead, controller and ink system at a very economical price. The system is available for porous or non-porous printing and can run up to 250 feet per minute. The VxJet7X prints one line of alphanumeric characters 3/8" or 5/8" in height.

Controller/Ink System

Microprocessor:	32-bit CMOS 68332
Power Input:	100-240VAC, 50-60Hz at 0.7A max
Enclosure:	Stainless Steel
Weight (Controller and IS only):	3.5 lbs. (1.6 kg)
Message Storage:	Ninety-nine 50 character messages max
Alarms:	Four status LED
Keypad:	Twelve special function keys, numeric keypad, QWERTY array with ALT key combinations for multiple character sets, four keys for cursor control
Display:	LCD, European display, Asian Display

Printheads

Weight:	5.4 lbs (2.4 kg)
Enclosure:	Paint over anodized aluminum
Electrical:	15 VDC input from controller
Ink Filtration:	25 micron in-line
Print Speed:	Up to 250 ft/min (print resolution dependent)
Ink Type:	Porous (water based) or Non-Porous (alcohol or MEK based) as indicated on label
Operating Pressure:	7 psi ink input
Environment:	Ambient operation temperature: 40°F to 110°F (10°C to 43.3°C)
Operating humidity:	10 - 90% non-condensing
Photosensors:	Two with up to .50" maximum read distance – optional external photocell available



VxJet 9X

The VxJet 9X printheads are designed to work with the Marksman Pro Vx, making it the smartest valve jet printer on the market. This printhead can print 1/2" to 7/8" characters at up to 650 feet per minute. The VxJet9X is available for porous or non-porous substrates.

Controller

Processor: SBC 850 MHz with 128 MB RAM
Power Input: 100-240VAC, 50-60Hz at 3A max
Ports: COM 1 - Serial Port RS232
 10/100 Base-T Ethernet
 Printhead, VxJet
 Encoder A
 Encoder B
 Strobe
 Auxiliary Port - Serial Port (Scanner)
 VGA Output
 Keyboard/MS Mouse
Enclosure: Stainless Steel
Weight (Controller only): 28.4 lbs. (12.9 kg)
Operating System: Windows XP®

Environment: Ambient operating temperature: 40° to 104° F (5° to 40° C)
Operating humidity: 10-90%, non-condensing
Print Heads: Up to 144 valves (72 per card)
 1 card is standard, 1 card is optional (a total of 16 valve heads with the optional second card)
Storage: 40 GB hard drive
Alarms: Optional beacon
User Interface Type: Graphical User Interface
Keyboard: 70-Key, QWERTY style, Elastomeric Keyboard
Display: 640 x 480 color LCD with touch screen, 10.4" diagonal
Print Head to Controller: Max. distance between print head and controller is 100 feet

Printheads

Weight: 5.4 lbs (2.4 kg)
Enclosure: Paint over anodized aluminum
Electrical: 15 VDC input from controller
Ink Filtration: 25 micron in-line
Print Speed: Up to 650 ft/min (print resolution dependent)

Ink Type: Porous (water based) or Non-Porous (alcohol or MEK based) as indicated on label.
Operating Pressure: 7 psi ink input
Environment: Ambient operation temperature: 40°F to 104°F (10°C to 40°C)
 Operating humidity: 10 - 90% non-condensing

Ink System

Enclosure: Stainless steel
Ink Filtration: 100 micron absolute (5760-319 Ink Filter Assembly)
Electrical: 103VAC-122VAC, 60Hz, 1.0 Amp max. (Non-European) 207VAC-253VAC, 50Hz, 0.5 Amp max. (European)
 Operating Pressure 20 psi to 25 psi (approximately)
Environment: Ambient operation temperature: 40°F to 104°F (10°C to 40°C)
Operating humidity: 10 - 90% non-condensing

Tubing Limitations: Maximum horizontal tube length = 100 ft.; Maximum vertical tube length (bottom of ink supply to bottom of highest print head) = 20 ft.
Ink Supply Limitations: Maximum height above ink supply (top of ink container to bottom of ink supply) = 8 ft.
 Maximum distance below ink supply (bottom of ink container to bottom of ink supply) = 8 ft.
 Maximum horizontal distance (between ink supply and ink container) = 8 ft.
 Maximum number of valves = 144

Distributor Information

